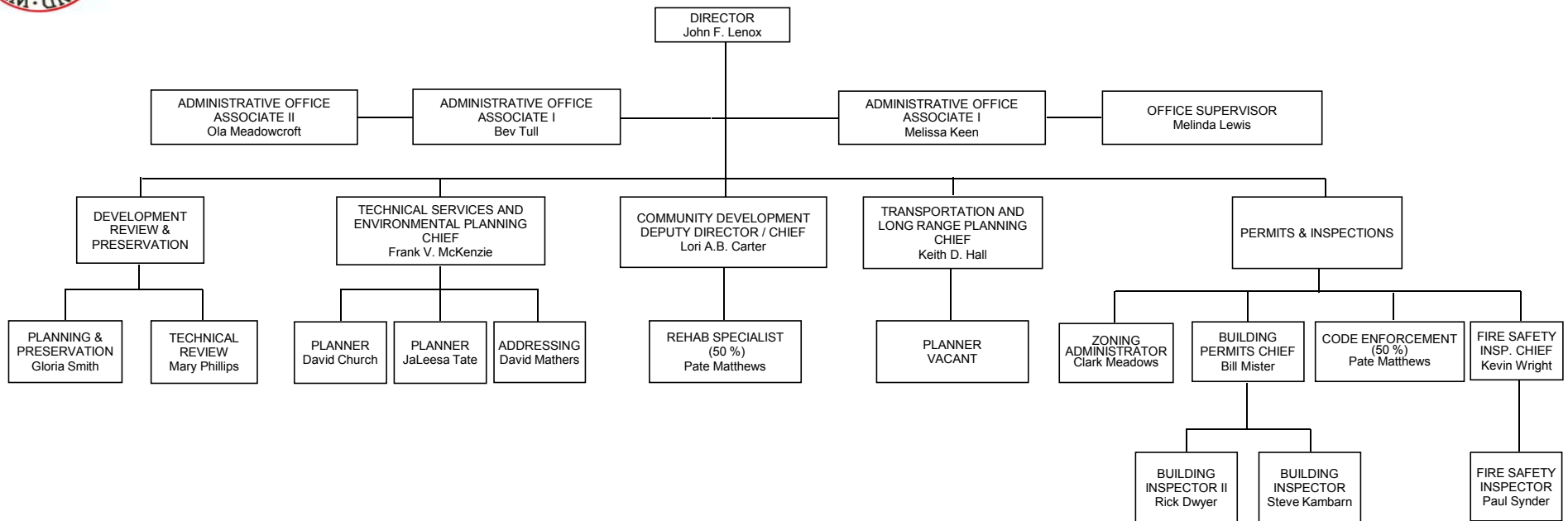




**DEPARTMENT OF PLANNING, ZONING AND COMMUNITY DEVELOPMENT**

**Fiscal Year 2015**

**Organization Chart**



Planning & Zoning  
Commission  
Land Preservation  
Special Projects  
Subdivisions  
Annexations  
Co. Historic Preservation

Chesapeake Bay Critical Area  
Forest Conservation  
GIS Analysis and Mapping  
GIS Support for Other Depts.\*  
Technical Services  
Natural Resources Conservation  
Comprehensive Numbering System  
MUNIS Permit Module

CDBG  
Community Development  
Housing  
Economic Development  
Urban Revitalization  
Neighborhood Development

Comprehensive Planning  
S/W MPO  
Priority Funding Areas  
Watershed Planning  
Impact Fee Tracking  
Annexations  
Planning Legislation  
Census

County Appeals Board  
Zoning Regulations  
Inspections  
Site Plan Review  
Ag. Reconciliation

Bldg. Code Admin.  
Electrical Lic. & Permits  
Fire Code Admin.  
Junkyard & Mobile Home  
Park Admin.

Nuisance Code  
Housing Code  
Zoning Inspections  
Rehabilitation

This Functional Organization Chart does not reflect any unfunded positions referenced in the Classification Plan

\*Technical Services also provides GIS Support for various other Departments, including various projects in support of Recreation and Parks, City and County Public Works, Sheriff's Office, City and County Fire/Ambulance Departments, Emergency Services, Board of Elections, County Attorney, States' Attorney, Wicomico County Health Dept., Tri-County Council, MD Dept of Planning, MD DNR and SWED. Governments and Commissions served: Wicomico County Executive and County Council, City of Salisbury Mayor and City Council, and the Salisbury/Wicomico Metropolitan Planning Organization.

Governments and Commissions served: Wicomico County Executive and County Council, City of Salisbury Mayor and City Council, Salisbury/Wicomico Planning and Zoning Commission, Wicomico County and City of Salisbury Boards of Zoning Appeals, Wicomico County Historic District Commission, Wicomico County Agricultural Reconciliation Committee, Wicomico County Electrical Board, Natural Resources Conservation Advisory Committee, and the Salisbury/Wicomico Metropolitan Planning Organization.