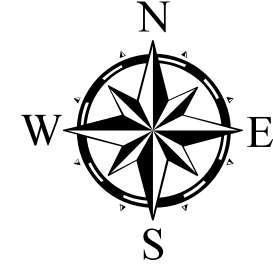


W I C O M I C O C O U N T Y

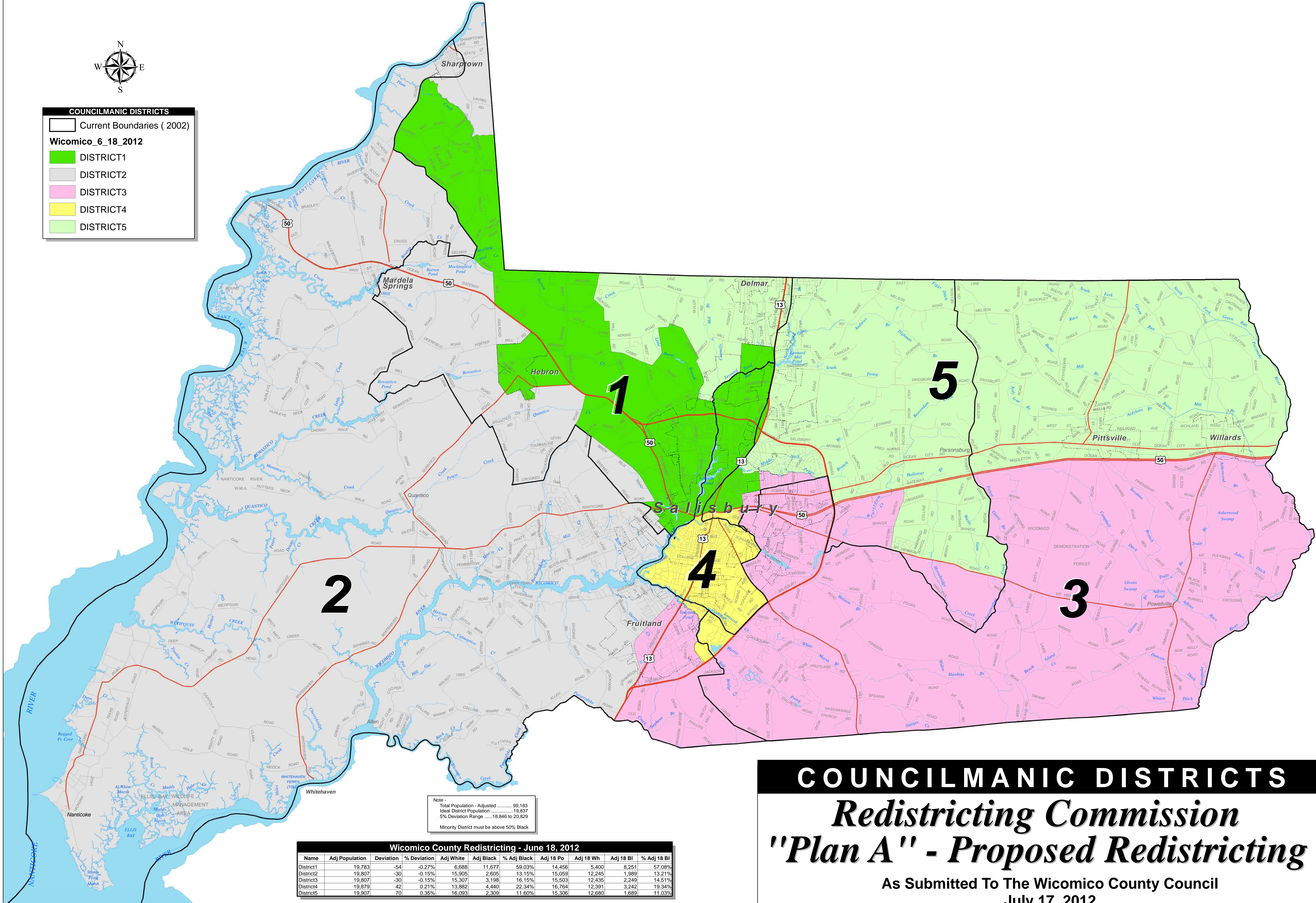


COUNCILMANIC DISTRICTS

Current Boundaries (2002)

Wicomico_6_18_2012

- DISTRICT1
- DISTRICT2
- DISTRICT3
- DISTRICT4
- DISTRICT5



Note -
 Total Population - Adjusted 99,183
 Ideal District Population 19,837
 5% Deviation Range 18,846 to 20,829
 Minority District must be above 50% Black

Wicomico County Redistricting - June 18, 2012										
Name	Adj Population	Deviation	% Deviation	Adj White	Adj Black	% Adj Black	Adj 18 Po	Adj 18 Wh	Adj 18 BI	% Adj 18 BI
District1	19,793	-54	-0.27%	6,688	11,677	59.03%	14,456	5,400	8,251	57.06%
District2	19,807	-30	-0.15%	15,905	2,605	13.15%	15,059	12,245	1,989	13.21%
District3	19,807	-30	-0.15%	15,307	3,198	16.15%	15,503	12,435	2,249	14.51%
District4	19,879	42	0.21%	13,882	4,440	22.34%	16,764	12,391	3,242	19.34%
District5	19,907	70	0.35%	16,093	2,309	11.60%	15,306	12,680	1,689	11.03%

COUNCILMANIC DISTRICTS

Redistricting Commission

"Plan A" - Proposed Redistricting

As Submitted To The Wicomico County Council
 July 17, 2012