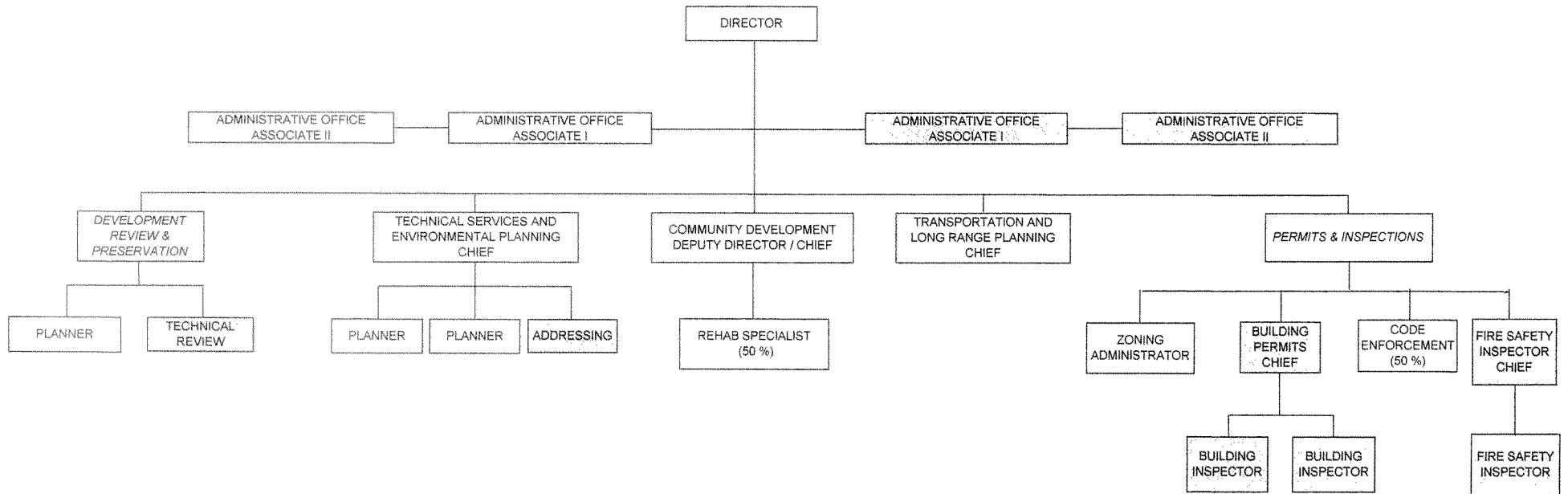


# Exhibit 1

## FUNCTIONAL ORGANIZATION CHART; SHOWING TRANSFERRED POSITIONS CITY OF SALISBURY/WICOMICO COUNTY DEPARTMENT OF PLANNING, ZONING AND COMMUNITY DEVELOPMENT

### ORGANIZATIONAL CHART FISCAL YEAR 2012 PROPOSED



Planning & Zoning  
Commission  
Land Preservation  
Special Projects  
*Subdivisions*  
Annexations  
Co. Historic Preservation

Chesapeake Bay Critical Area  
Forest Conservation  
GIS Analysis and Mapping  
GIS Support for Other Depts.\*  
Technical Services  
Natural Resources Conservation  
*Comprehensive Numbering System*

CDBG  
Community Development  
Housing  
Economic Development  
Urban Revitalization  
Neighborhood Development

Transportation  
Transit Planning  
Comprehensive Planning  
Priority Funding Areas  
Annexations  
State Clearinghouse  
*Census*

County Appeals Board  
Zoning Regulations  
Inspections  
Site Plan Review  
Ag. Reconciliation  
*Junkyard & Mobile Home  
Park Admin.*

*Bldg. Code Admin.  
Electrical Lic. & Permits*

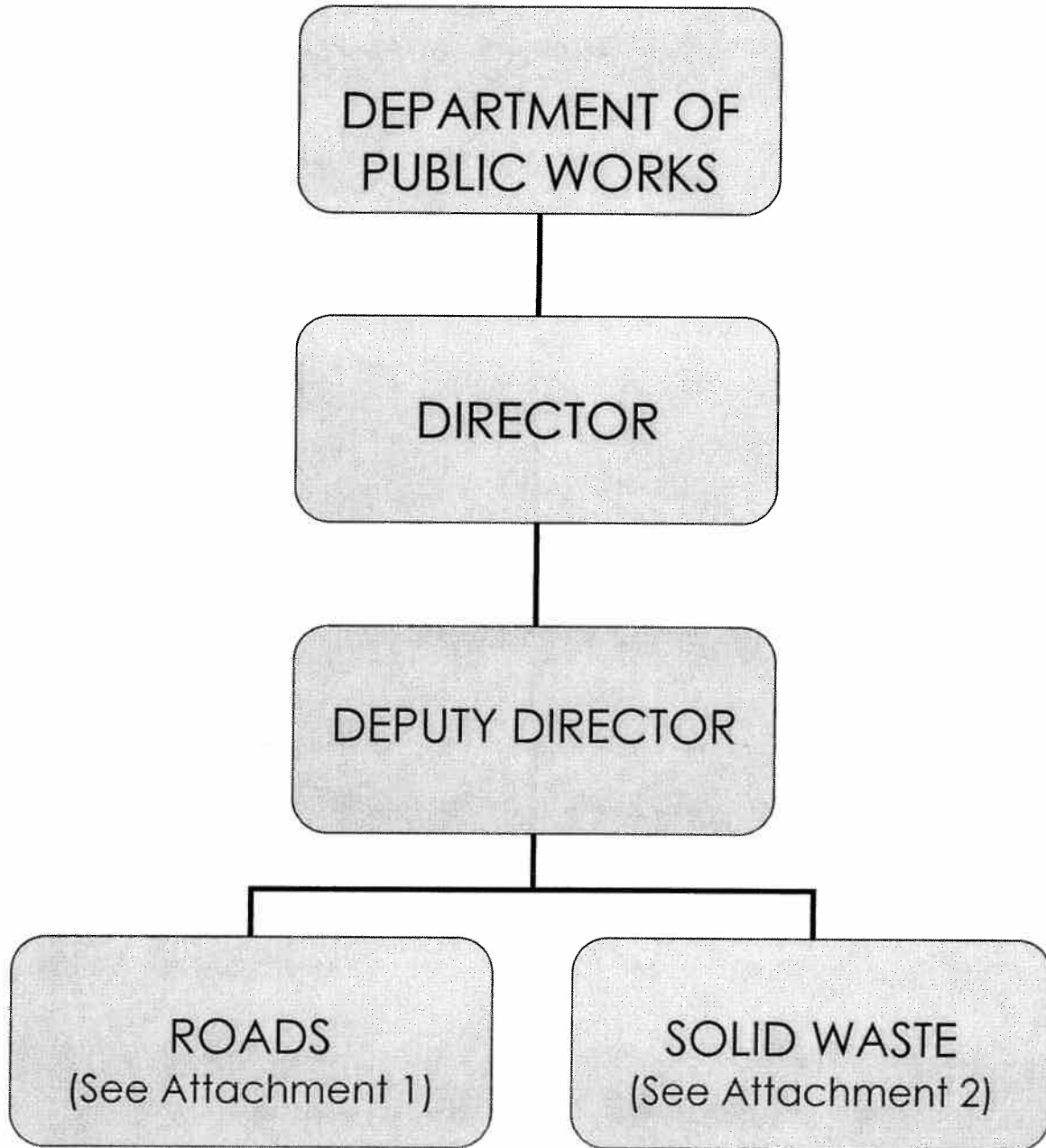
*Nuisance Code  
Fire Code Admin.*  
Housing Code  
Zoning Inspections  
Rehabilitation

This Functional Organization Chart does not reflect any unfunded positions referenced in the Classification Plan

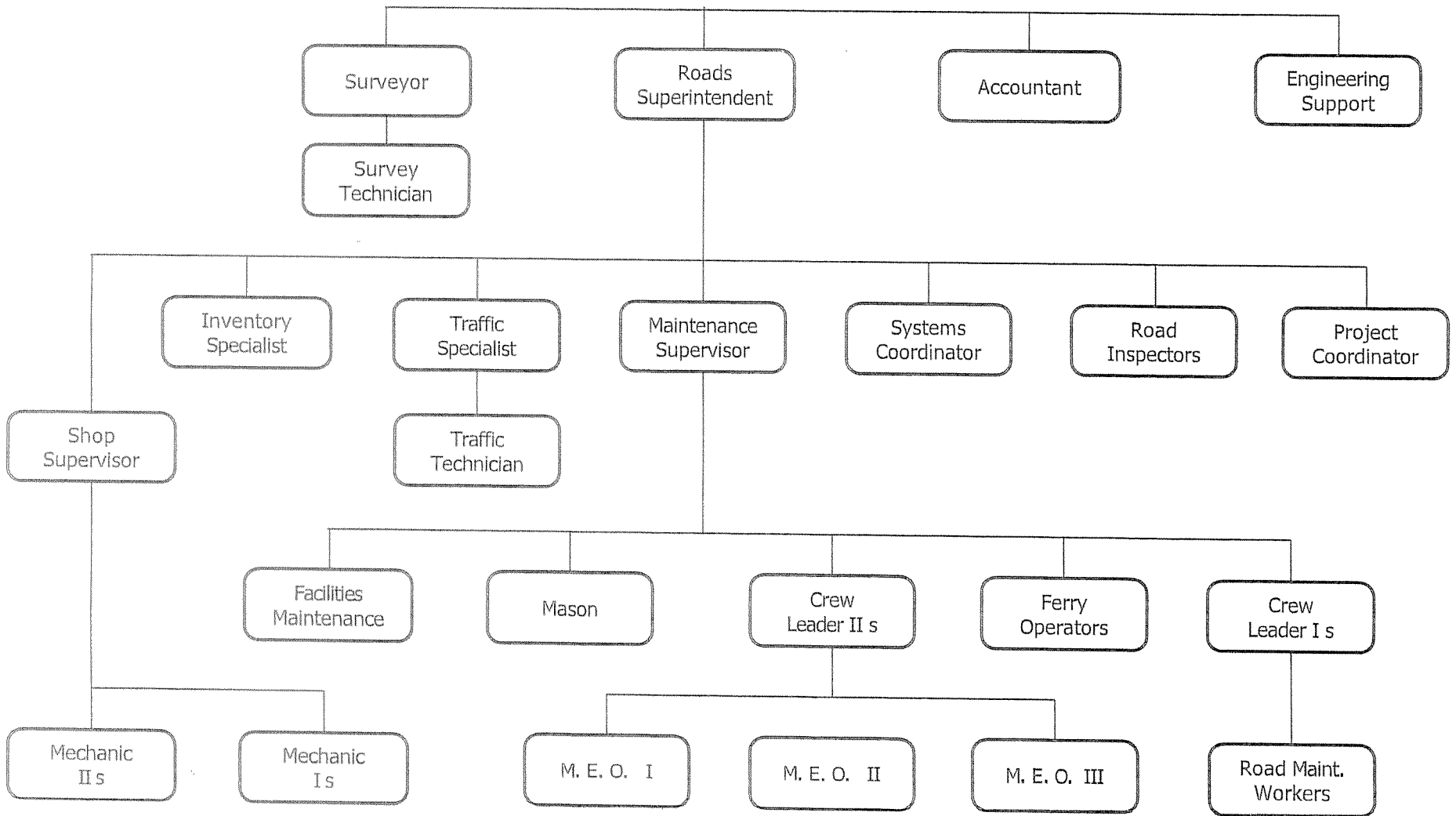
\*Technical Services also provides GIS Support for various other Departments, including various projects in support of Recreation and Parks, City and County Public Works, Sheriff's Office, City and County Fire/Ambulance Departments, Emergency Services, Board of Elections, County Attorney, States' Attorney, Wicomico County Health Dept., Tri-County Council, MD Dept of Planning, MD DNR and SWED. Governments and Commissions served: Wicomico County Executive and County Council, City of Salisbury Mayor and City Council, and the Salisbury/Wicomico Metropolitan Planning Organization.

Governments and Commissions served: Wicomico County Executive and County Council, City of Salisbury Mayor and City Council, Salisbury/Wicomico Planning and Zoning Commission, Wicomico County and City of Salisbury Boards of Zoning Appeals, Wicomico County Historic District Commission, Wicomico County Agricultural Reconciliation Committee, *Wicomico County Electrical Board*, Natural Resources Conservation Advisory Committee, and the Salisbury/Wicomico Metropolitan Planning Organization.

EXHIBIT 2



Wicomico County, Maryland  
 DEPARTMENT OF PUBLIC WORKS  
 ROADS DIVISION



Wicomico County, Maryland  
 DEPARTMENT OF PUBLIC WORKS  
 SOLID WASTE DIVISION

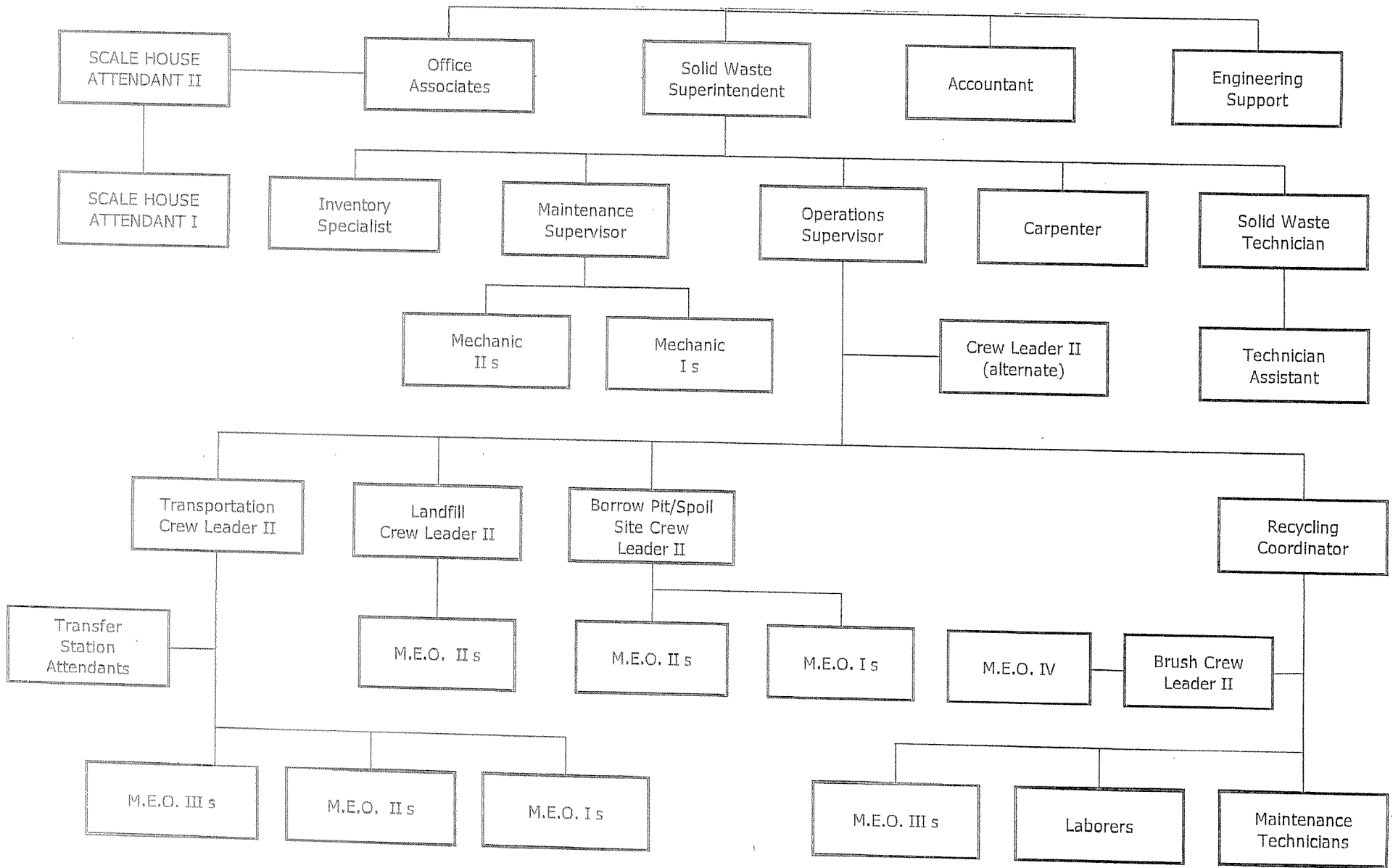


EXHIBIT 3

