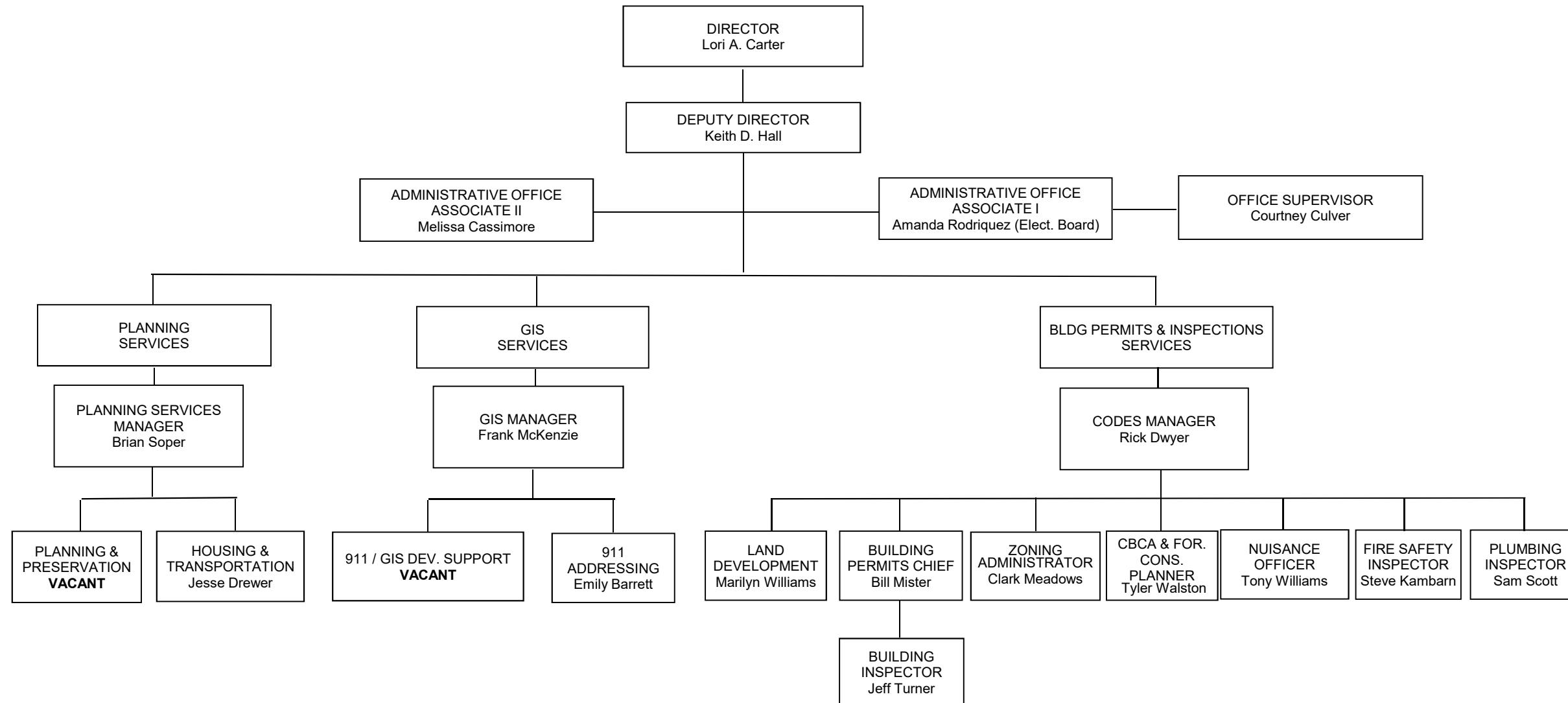




WICOMICO COUNTY
DEPARTMENT OF PLANNING, ZONING AND COMMUNITY DEVELOPMENT



FY 2021
Organization Chart



This Functional Organization Chart does not reflect any unfunded positions referenced in the Classification Plan

*Technical Services also provides GIS Support for various other Departments, including various projects in support of Recreation and Parks, City and County Public Works, Sheriff's Office, City and County Fire/Ambulance Departments, Emergency Services, Board of Elections, County Attorney, States' Attorney, Wicomico County Health Dept., Tri-County Council, MD Dept of Planning, MD DNR and SWED.

Governments and Commissions served: Wicomico County Executive and County Council, Salisbury/Wicomico Metropolitan Planning Organization, Salisbury/Wicomico Planning and Zoning Commission, Wicomico County Board of Appeals, Wicomico County Historic District Commission, Wicomico County Agricultural Reconciliation Committee, Wicomico County Electrical Board, Wicomico Phase II Watershed Implementation Plan Core Planning Team, and the Natural Resources Conservation Advisory Committee.