



Wicomico County Purchasing  
125 N. Division St. Room B-3  
Salisbury, MD 21801  
Ph. 410-548-4805 Fax 410-334-3130  
Email: [purchasing@wicomicocounty.org](mailto:purchasing@wicomicocounty.org)

## **Addendum # 1 Baseball Field Dugouts**

Date of Addendum: 3/16/17

### **NOTICE TO ALL BIDDERS AND PLANHOLDERS**

The Bid Documents for the above-referenced Project are modified as set forth in this Addendum. The original Bid Documents and any previously issued addenda remain in full force and effect, except as modified by this Addendum, which is hereby made part of the Bid Documents. Vendors will take this Addendum into consideration when preparing and submitting a bid, and shall acknowledge receipt of this Addendum in the space provided in the Bid Documents.

### **BID SUBMITTAL DEADLINE**

The bid submittal time has not been changed.

### **1.0 – ATTACHMENTS**

<b>Item</b>	<b>Description</b>
1.1	Drawing sk-3 dated 2/16/17
1.2	Drawing sk-4 dated 2/16/17

### **2.0 – BID SPECIFICATIONS**

The following changes have been made to the Bid Documents.

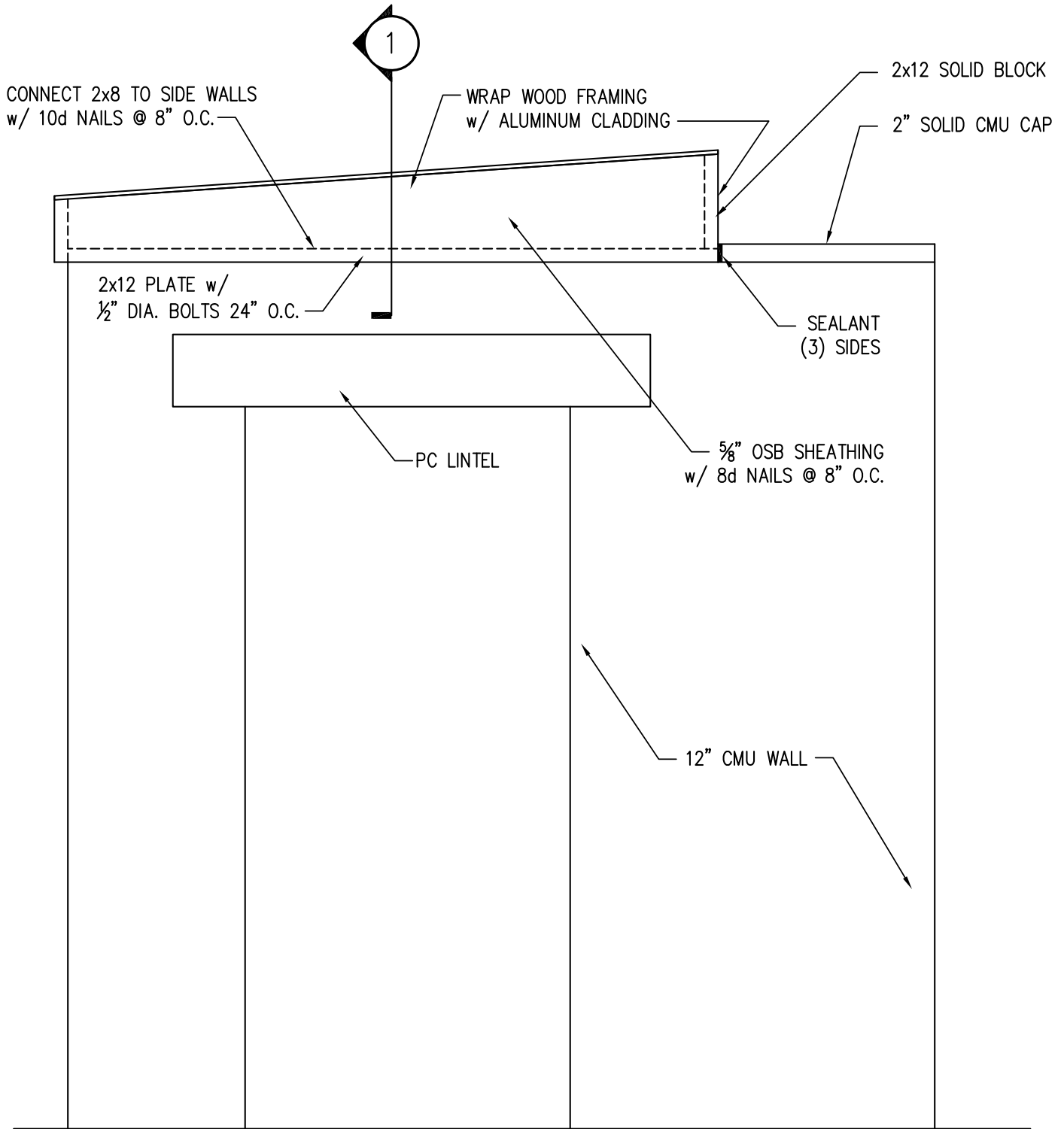
<b>Item</b>	<b>Description</b>
2.1	On page 15, Section IV, Subsection C.1.b – REMOVE Phase II. Phase II is no longer part of this project and will Bid at a later date.
2.2	On page 18, FORM OF BID – CHANGE Quantity of eight (8) to two (2). This project only consists of the two (2) dugouts on Field # 5.

### **3.0 – QUESTIONS AND ANSWERS**

The following questions and answers are provided as a matter of information to clarify issues raised about the Bid Documents.

<b>Item</b>	<b>Questions and Answers</b>
3.1	Q. Will the EP Henry Block be Splitface? A. Yes
3.2	Q. The drawings show back wall with openings starting at 6' then continuing to 8' with CMU pilasters. Under General Requirements it calls for the back wall and one end wall to only go 4' high which is correct? A. Back wall is to be 4'
3.3	Q. If walls only go 4' high how do we cap them off? Just grout last course CMU solid? A. Solid cap. (As shown on additional drawing)

**END OF ADDENDUM**



**ELEVATION**

3/4" = 1'-0"



**DAVIS  
BOWEN &  
FRIEDEL, INC.**

**ARCHITECTS, ENGINEERS & SURVEYORS**

SALISBURY, MARYLAND ■ MILFORD, DELAWARE  
410.543.9091 302.424.1441

**HENRY S. PARKER**  
DUGOUT  
Salisbury, MD

COPYRIGHT © 2007

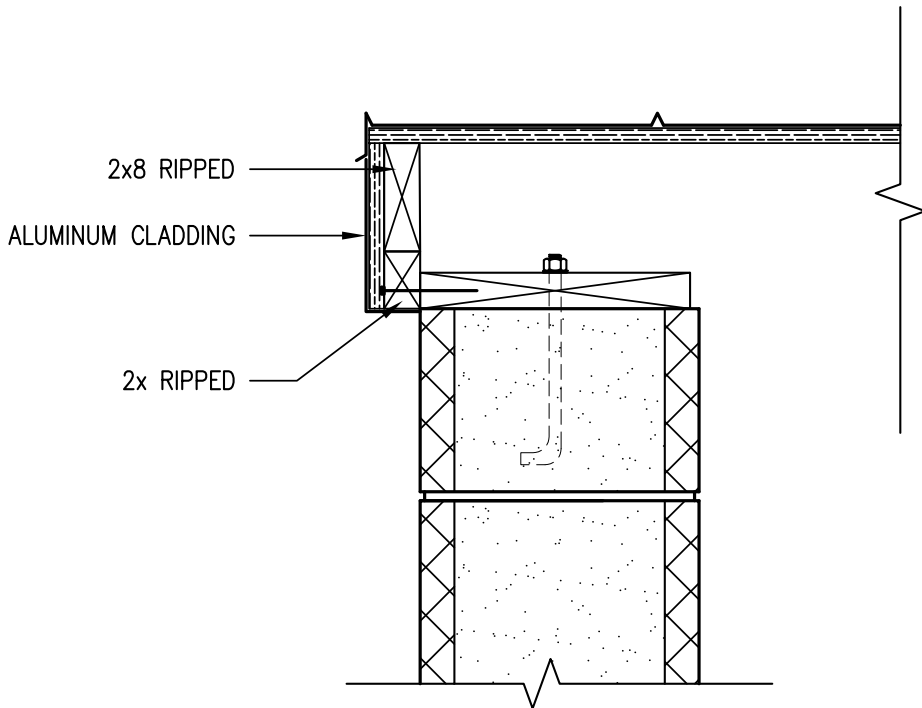
Dwg.No.:

sk-3

Date: 2/16/2017

Scale: AS NOTED

Proj.No.: 0166B004.A01



**EAVE DETAIL**



$3/4" = 1'-0"$



**DAVIS  
BOWEN &  
FRIEDEL, INC.**

**ARCHITECTS, ENGINEERS & SURVEYORS**  
SALISBURY, MARYLAND ■ MILFORD, DELAWARE  
410.543.9091 302.424.1441

HENRY S. PARKER  
DUGOUT  
Salisbury, MD

COPYRIGHT © 2007  
Dwg.No.:  
sk-4

Date: 2/16/2017	Scale: AS NOTED	Proj.No.: 0166B004.A01
-----------------	-----------------	------------------------