

Wicomico County 2012 Redistricting Presentation

All Advisory Committee Members
Appointed by Current Council

Wicomico County
Redistricting Committee Member List

- Eddie Boyd (D) appointed by Sheree S. Hughes (D)
District 1
- Stacey Weisner (D) appointed by Stevie Prettyman (R)
District 2
- Joe Collins (R) appointed by Gail Bartkovich (R)
District 3
- Deke Sheller (R) appointed by John Hall (R)
District 4
- Charlie Gray (R) appointed by Joe Holloway (R)
District 5
- G.A. Harrison (R) appointed by Bob Culver (R)
At Large
- Harry Basehart (D) appointed by Matt Holloway (R)
At Large

Staff

- Matt Creamer Council Administrator
- Melissa Holland Executive Office Associate
- Ed Baker County Attorney
- Frank McKenzie Chief of GIS Services

County Charter Mandates

- County Council must appoint a redistricting committee
- 5 different Councilmanic Districts
- 2 members, each elected from the county at large
- Councilmanic districts must be “substantially equal” in population
- Councilmanic districts must be reasonably “compact” and “contiguous”

Council Charge

- District 1 shall be at least fifty one percent African American and be as much more than 51% of the district population as can reasonably occur
- substantially equal in population
- reasonably compact and contiguous
- movement in district boundaries be made so that as few people as possible will be affected, by their being changed from one district to another

Committee Methodologies

- State law requires that Maryland use “adjusted population” numbers for redistricting
- Total Population Wicomico County - 98,733
- Total “Adjusted” Population - 99,183
- Ideal or Perfect Number for each District is 19,837
- A deviation of up to 5% from ideal is permitted.
Allowable Range: 18,846 to 20,829
- The Committee attempted to use “natural boundaries” (Rivers, Creeks, Highways, Secondary Roads, Railroad Tracks, etc.) whenever possible.

Dataset from 10 years Ago

| 2000 Census | |
|-------------|--------|
| Total Pop | 84,644 |
| Black | 19,717 |
| White | 61,438 |
| Ideal Pop | 16,929 |

2000 Census

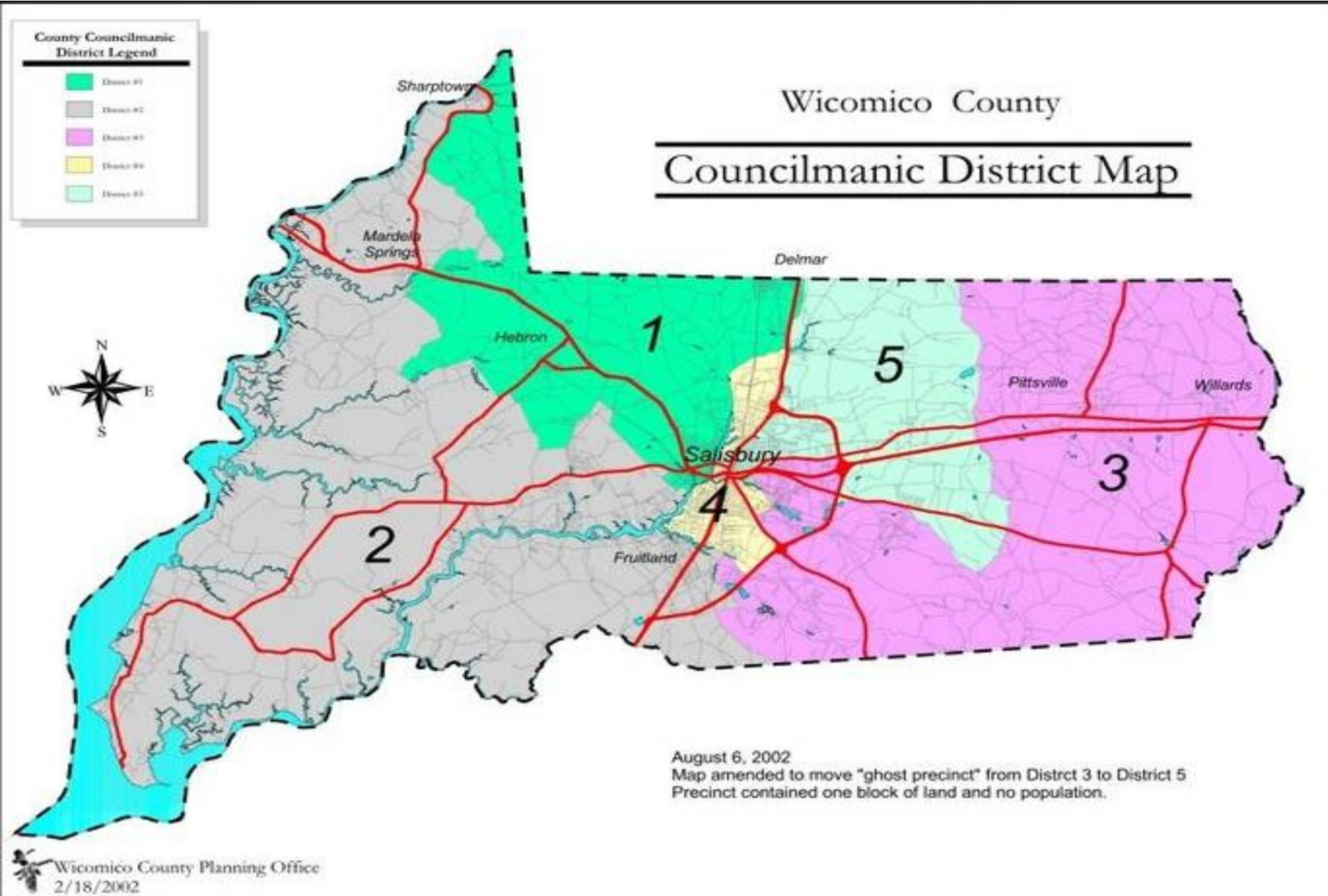
Wicomico County - Councilmanic District Population (Amended 2002)

Minimal Impact - Plan B.1

Minimal Impact to Precincts + Within 5% Deviation Factor

| | Total Pop | Deviation | % Deviation | White | Black | % Black |
|--------------|---------------|-----------|-------------|---------------|---------------|---------|
| District 1 | 16,537 | -392 | -2.32% | 6,984 | 8,986 | 54.34% |
| District 2 | 17,771 | 842 | 4.97% | 14,219 | 2,972 | 16.72% |
| District 3 | 16,858 | -71 | -0.42% | 15,129 | 979 | 5.81% |
| District 4 | 16,561 | -368 | -2.17% | 12,721 | 2,971 | 17.94% |
| District 5 | 16,917 | -12 | -0.07% | 12,385 | 3,809 | 22.52% |
| Total | 84,644 | | | 61,438 | 19,717 | |

Map From Ten Years Ago after County Council Redistricting



Dataset from latest census

| 2010 Census - Existing District Boundary Analysis | | | | | | |
|--|---------------|------------------|--------------------|------------------|------------------|----------------|
| Wicomico County Redistricting | | | | | | |
| Name | Ad Pop | Deviation | % Deviation | Adj White | Adj Black | % Black |
| District 1 | 19,176 | -661 | -3.33% | 8,837 | 9,213 | 48.04% |
| District 2 | 21,636 | 1,799 | 9.07% | 16,671 | 3,436 | 15.88% |
| District 3 | 18,907 | -930 | -4.69% | 15,989 | 1,812 | 9.58% |
| District 4 | 21,265 | 1,428 | 7.20% | 14,433 | 5,161 | 24.27% |
| District 5 | 18,199 | -1,638 | -8.26% | 11,945 | 4,607 | 25.31% |
| Total | 99,183 | | | 67,875 | 24,229 | |
| <i>2010 Census Data - Adjusted Population</i> | | | | | | |

2000 Census

Wicomico County - Councilmanic District Population (Amended 2002)

Minimal Impact - Plan B.1

Minimal Impact to Precincts + Within 5% Deviation Factor

| | Total Pop | Deviation | % Deviation | White | Black | % Black |
|--------------|---------------|-----------|-------------|---------------|---------------|---------|
| District 1 | 16,537 | -392 | -2.32% | 6,984 | 8,986 | 54.34% |
| District 2 | 17,771 | 842 | 4.97% | 14,219 | 2,972 | 16.72% |
| District 3 | 16,858 | -71 | -0.42% | 15,129 | 979 | 5.81% |
| District 4 | 16,561 | -368 | -2.17% | 12,721 | 2,971 | 17.94% |
| District 5 | 16,917 | -12 | -0.07% | 12,385 | 3,809 | 22.52% |
| Total | 84,644 | | | 61,438 | 19,717 | |

2010 Census - Existing District Boundary Analysis

Wicomico County Redistricting

| Name | Ad Pop | Deviation | % Deviation | Adj White | Adj Black | % Black |
|--------------|---------------|-----------|-------------|---------------|---------------|---------|
| District 1 | 19,176 | -661 | -3.33% | 8,837 | 9,213 | 48.04% |
| District 2 | 21,636 | 1,799 | 9.07% | 16,671 | 3,436 | 15.88% |
| District 3 | 18,907 | -930 | -4.69% | 15,989 | 1,812 | 9.58% |
| District 4 | 21,265 | 1,428 | 7.20% | 14,433 | 5,161 | 24.27% |
| District 5 | 18,199 | -1,638 | -8.26% | 11,945 | 4,607 | 25.31% |
| Total | 99,183 | | | 67,875 | 24,229 | |

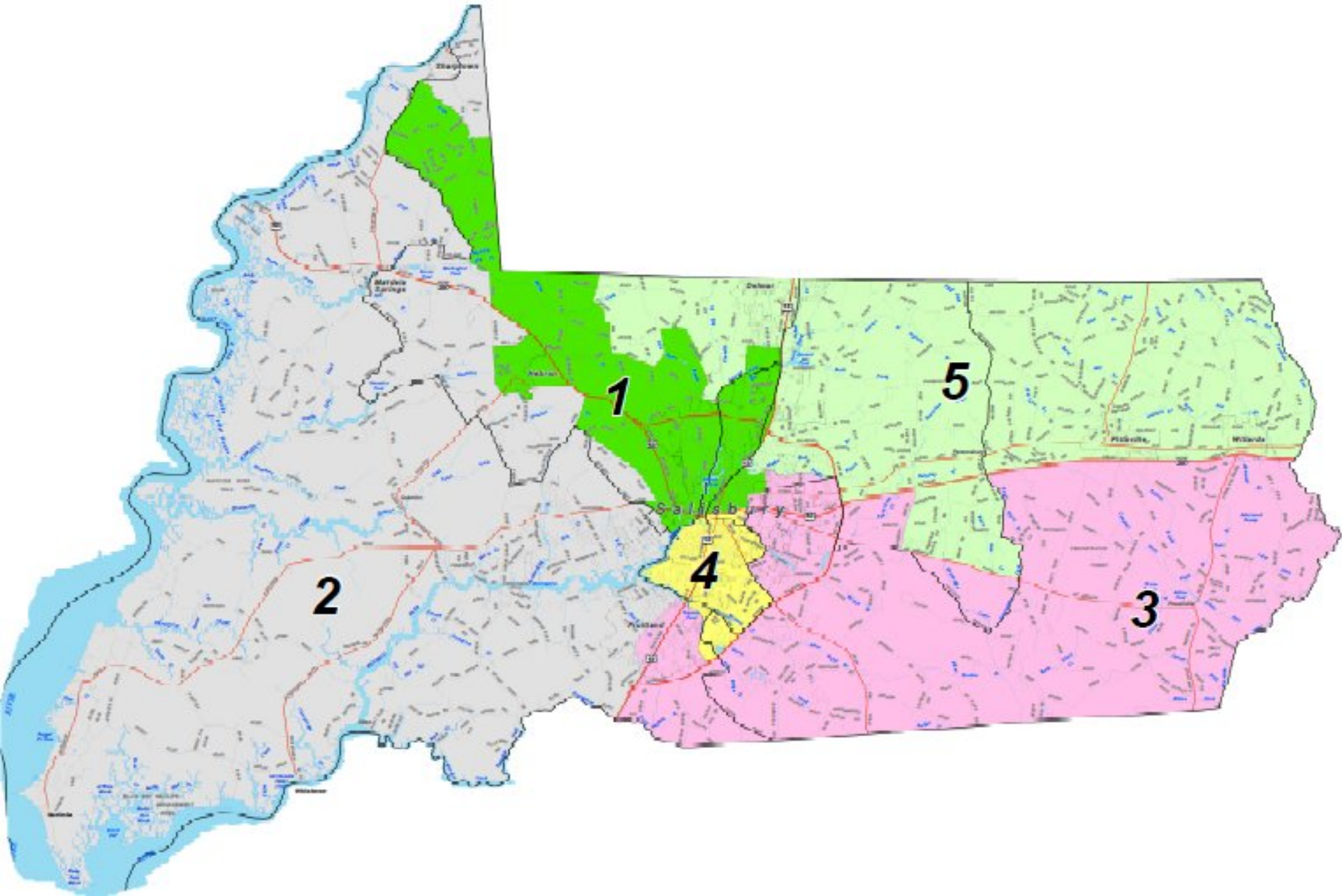
2010 Census Data - Adjusted Population

Dataset Submitted by Redistricting Committee

Wicomico County Redistricting - June 18, 2012

| Name | Adj Population | Deviation | % Deviation | Adj White | Adj Black | % Adj Black | Adj 18 Po | Adj 18 Wh | Adj 18 BI | % Adj 18 BI |
|-----------|----------------|-----------|-------------|-----------|-----------|-------------|-----------|-----------|-----------|-------------|
| District1 | 19,783 | -54 | -0.27% | 6,688 | 11,677 | 59.03% | 14,456 | 5,400 | 8,251 | 57.08% |
| District2 | 19,807 | -30 | -0.15% | 15,905 | 2,605 | 13.15% | 15,059 | 12,245 | 1,989 | 13.21% |
| District3 | 19,807 | -30 | -0.15% | 15,307 | 3,198 | 16.15% | 15,503 | 12,435 | 2,249 | 14.51% |
| District4 | 19,879 | 42 | 0.21% | 13,882 | 4,440 | 22.34% | 16,764 | 12,391 | 3,242 | 19.34% |
| District5 | 19,907 | 70 | 0.35% | 16,093 | 2,309 | 11.60% | 15,306 | 12,680 | 1,689 | 11.03% |

Final 2012 Redistricting Committee Map



Comparison – Beginning and Ending District Data

2010 Census - Existing District Boundary Analysis Wicomico County Redistricting

| Name | Ad Pop | Deviation | % Deviation | Adj White | Adj Black | % Black |
|--------------|---------------|-----------|-------------|---------------|---------------|---------|
| District 1 | 19,176 | -661 | -3.33% | 8,837 | 9,213 | 48.04% |
| District 2 | 21,636 | 1,799 | 9.07% | 16,671 | 3,436 | 15.88% |
| District 3 | 18,907 | -930 | -4.69% | 15,989 | 1,812 | 9.58% |
| District 4 | 21,265 | 1,428 | 7.20% | 14,433 | 5,161 | 24.27% |
| District 5 | 18,199 | -1,638 | -8.26% | 11,945 | 4,607 | 25.31% |
| Total | 99,183 | | | 67,875 | 24,229 | |

2010 Census Data - Adjusted Population

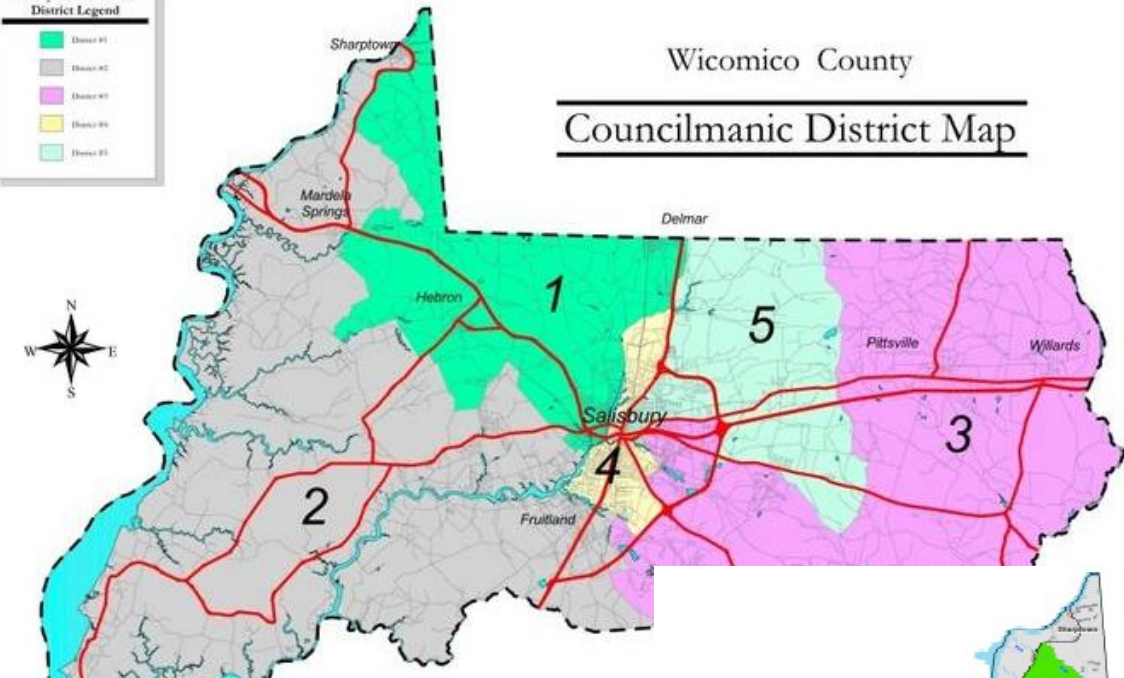
Wicomico County Redistricting - June 18, 2012

| Name | Adj Population | Deviation | % Deviation | Adj White | Adj Black | % Adj Black | Adj 18 Po | Adj 18 Wh | Adj 18 BI | % Adj 18 BI |
|-----------|----------------|-----------|-------------|-----------|-----------|-------------|-----------|-----------|-----------|-------------|
| District1 | 19,783 | -54 | -0.27% | 6,688 | 11,677 | 59.03% | 14,456 | 5,400 | 8,251 | 57.08% |
| District2 | 19,807 | -30 | -0.15% | 15,905 | 2,605 | 13.15% | 15,059 | 12,245 | 1,989 | 13.21% |
| District3 | 19,807 | -30 | -0.15% | 15,307 | 3,198 | 16.15% | 15,503 | 12,435 | 2,249 | 14.51% |
| District4 | 19,879 | 42 | 0.21% | 13,882 | 4,440 | 22.34% | 16,764 | 12,391 | 3,242 | 19.34% |
| District5 | 19,907 | 70 | 0.35% | 16,093 | 2,309 | 11.60% | 15,306 | 12,680 | 1,689 | 11.03% |

County Councilmanic District Legend

| | |
|---|-------------|
| ■ | District #1 |
| ■ | District #2 |
| ■ | District #3 |
| ■ | District #4 |
| ■ | District #5 |

Wicomico County
Councilmanic District Map



Current District Map

August 6, 21
 Map amend
 Precinct cor

Wicomico County Planning Office
 2/18/2002

Proposed District Map

